

# Simplant<sup>®</sup>

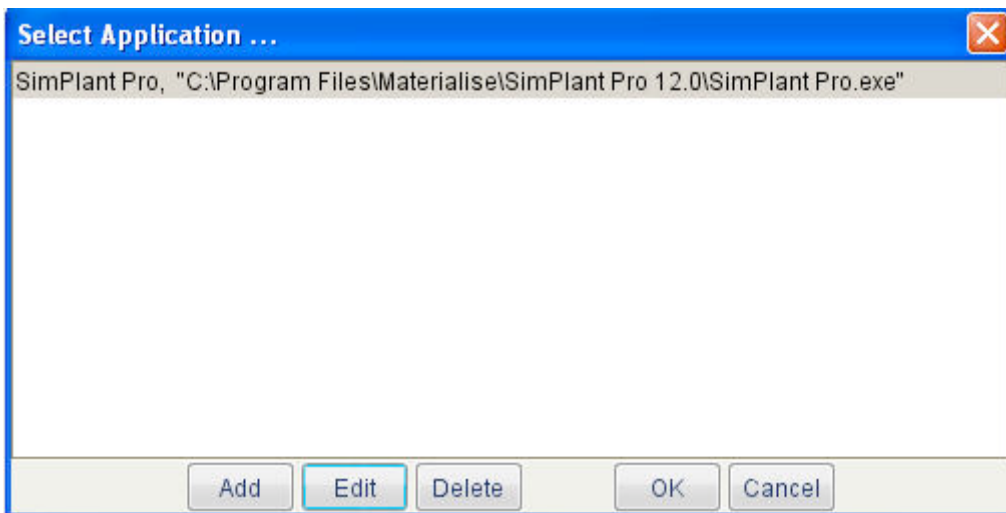
## CBCT to Simplant<sup>®</sup>

- Automated export protocol for Planmeca

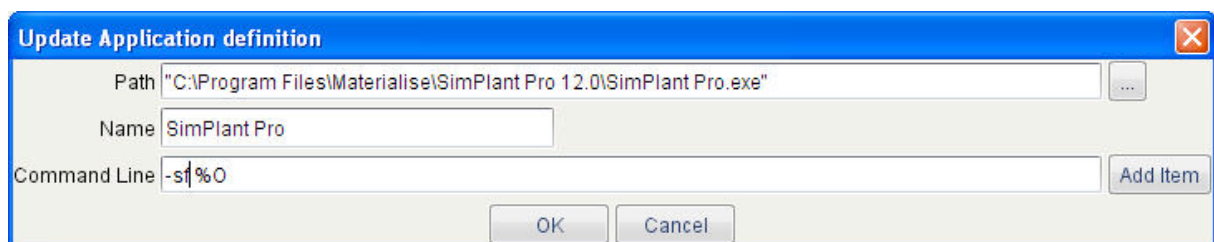
This protocol gives a detailed description of the steps to be followed for Romexis 3D quick launch to Simplant. This protocol aims at an optimal visualization of your images in Simplant but does not guarantee easy segmentation.

## Part 1: Romexis software

1. Go to Romexis Admin Module, External Applications, and configure a 3D Imaging Application by pressing SELECT (3D Imaging Application).
2. In Select Application dialog, press ADD to add a new application definition.

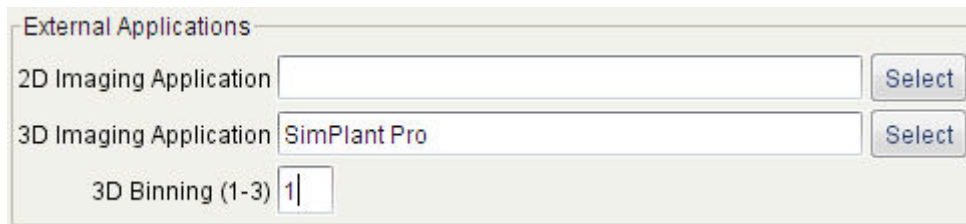


3. In Add Application Definition dialog, BROWSE the path to Simplant Pro, and CHANGE the Command Line text field to: **-sf %O**.



Finally, press OK to return to the Romexis Admin Module.

4. Fill out "1" in the 3D binning field



External Applications

2D Imaging Application

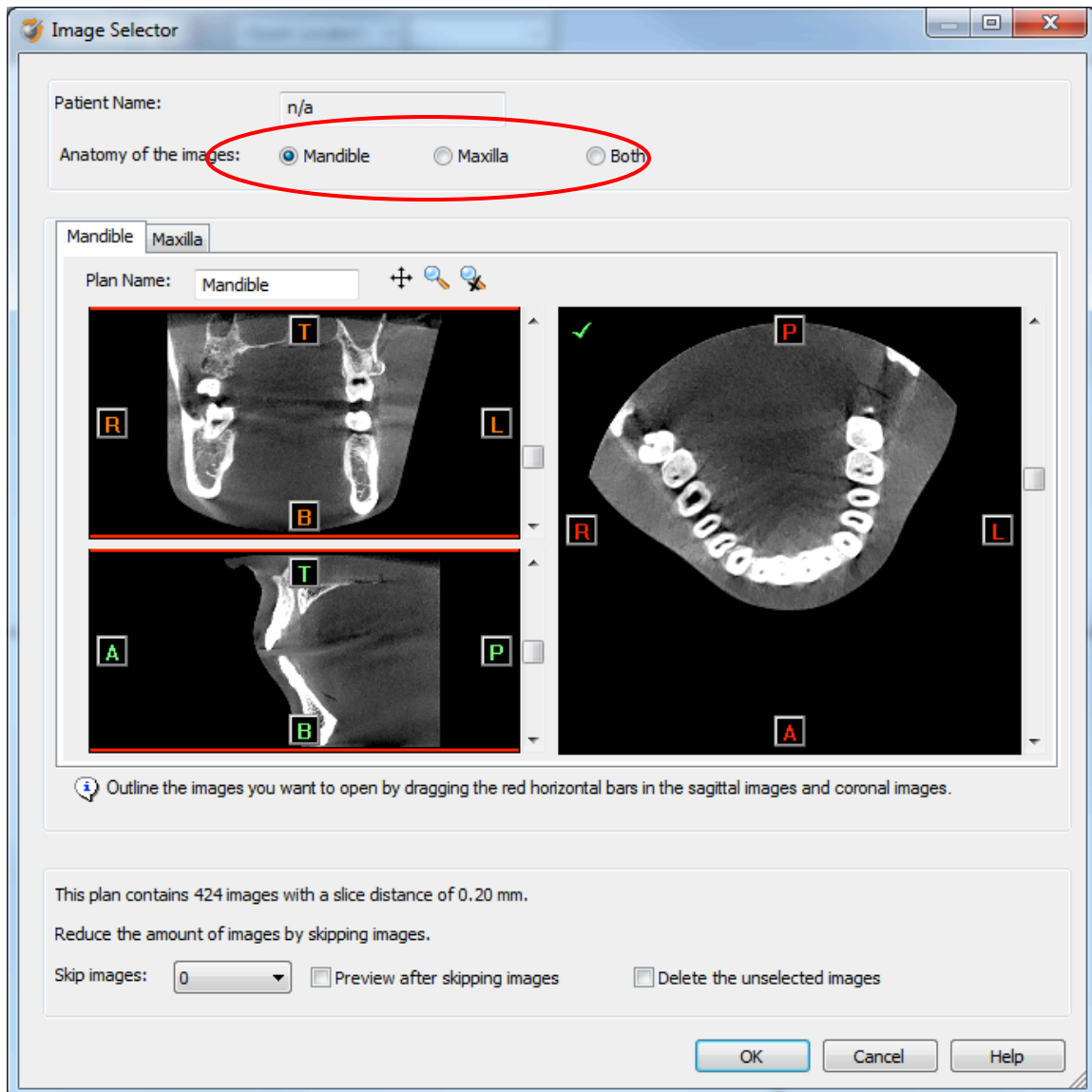
3D Imaging Application

3D Binning (1-3)

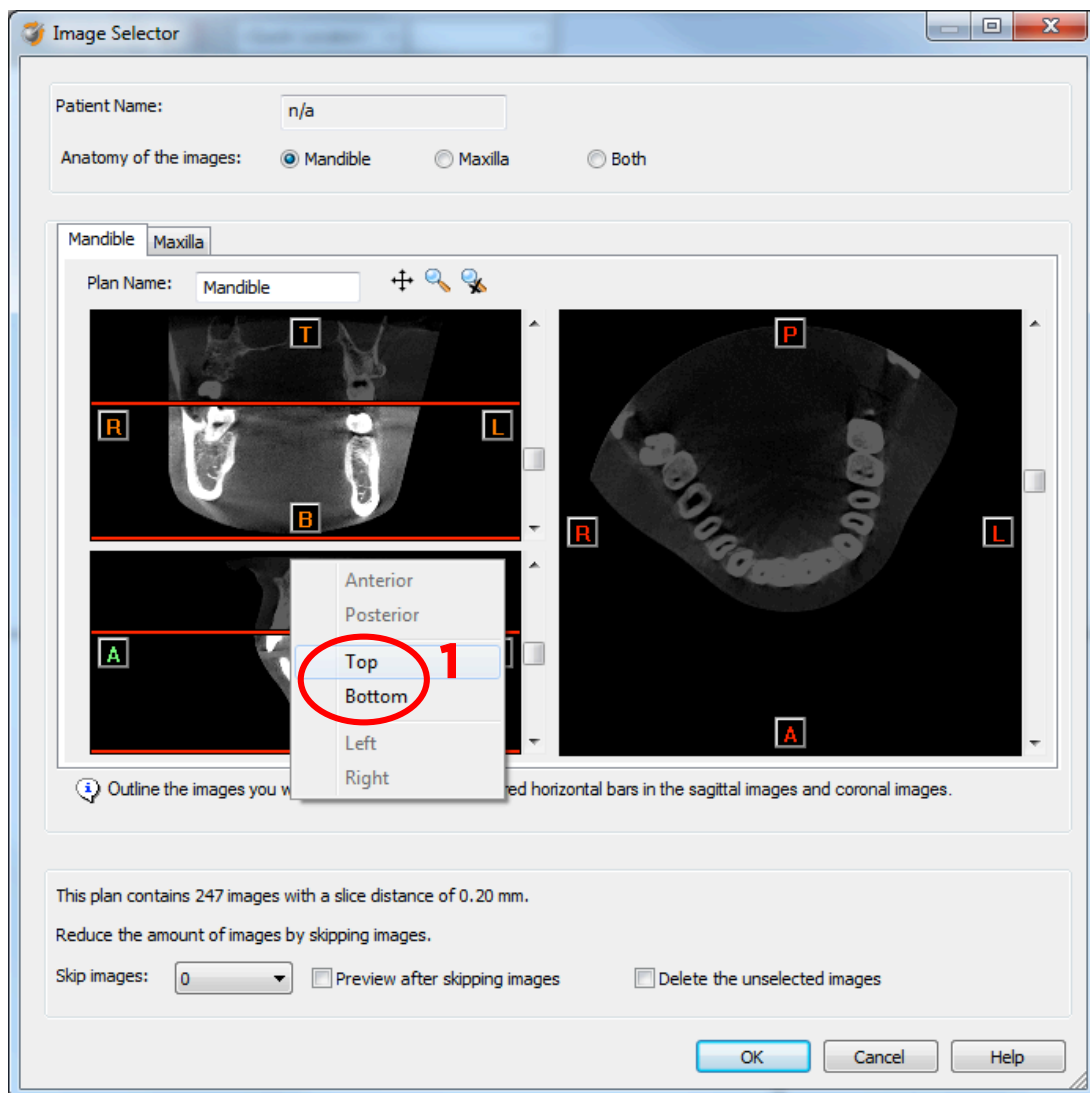
5. Click the "Save" button to store the configuration
6. Go to the Romexis Patient Module and OPEN A PATIENT.  
Go to Romexis 3D Module and OPEN A 3D IMAGE.
7. To open the 3D image in Simplant, press LAUNCH button in the 3D MODULE and the image opens in Simplant automatically.

## Part 2: Simplant® software

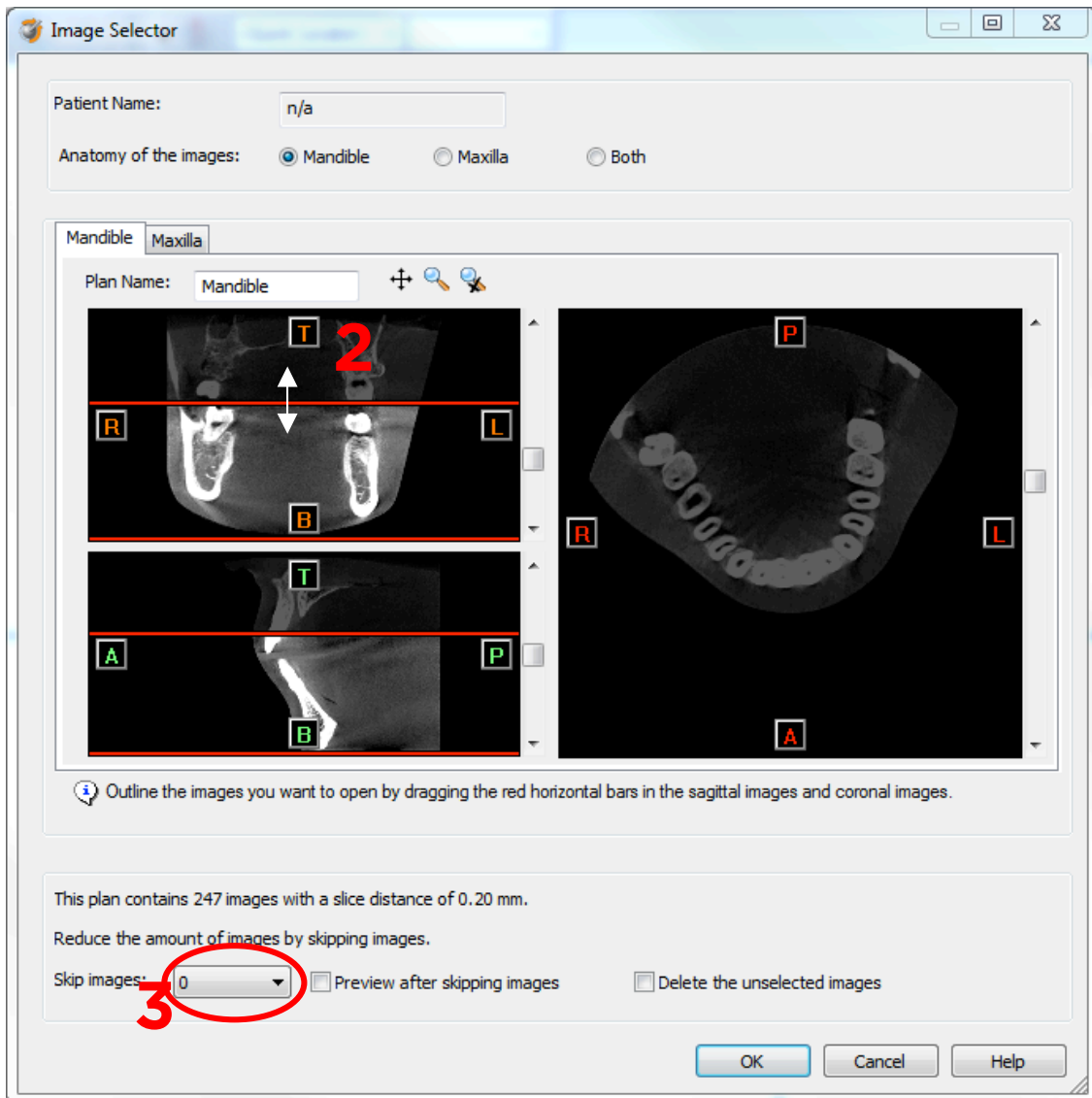
1. When Simplant opens, an Image Selector dialog is prompted to the user. In this dialog, the user selects the corresponding anatomy of the images, and selects the required images for importing.



If one or more orientation parameters were not exported, review if the orientation that was set is correct. The orientation can be adjusted by selecting the correct orientation parameter in the dropdown (1).



In order to reduce software load, you can REMOVE UNNECESSARY IMAGES from the start or the end of the frame set by dragging the red lines in the coronal and sagittal view.(2)



In order to further reduce software load, you can remove axial images by selecting the skipped image count different from 0 (for example: skip images = 1 selects every second image, skip images = 2 selects every 3<sup>rd</sup> image) (3).

For Planmecca exported dicom sets, the slice distance is 0.16mm. It is recommended to skip 1 image for these image sets.

When ready, press OK and the software imports the selected frame set to Simplant.

2. You are now ready to start your planning.

All trademarks and company names are the property of their respective owners. Dentsply Sirona does not waive any rights to its trademarks by not using the symbols ® or ™. 32670670-USX-1610 © 2016 Dentsply Sirona. All rights reserved.

[www.dentsplysirona.com](http://www.dentsplysirona.com)